

FOR CONSTRUCTION



Due to Screen Variation and Digital Options Within the Design Program Rendering May Not Reflect Actual Selections.

Selections and upgrades are a representation and may not be included in the final price.

Plans furnished by RED LEAF CUSTOM HOMES are prepared by designers who are not registered as professional Architects or professional Engineers. RED LEAF CUSTOM HOMES expressly disclaims any liability whatsoever for errors of any kind which may be found on the plans. Use of such plans shall be at the Sole risk of the User. Any plans furnished by RED LEAF CUSTOM HOMES are furnished without any warranty that they are suitable for any general or particular purpose. Reliance by any User of these plans and All Responsibilities for the usage and/or calculation of correct structural materials, spans, loads, bearing points and capacities, or application of the art or science of construction based on the principles of mathematics, aesthetics or the physical sciences must be the Responsibility of the Builder, the Owner, or the User of the plans.

Any use, reproduction, copying, modification, or derivative work of the plan(s), sketches, or details furnished by RED LEAF CUSTOM HOMES, LLC, is a violation of the United States Federal Copyright Act.



DRAWINGS PROVIDED BY:
RED LEAF CUSTOM HOMES

PROJECT DESCRIPTION:
AFTON
7457 Eagle Pointe Drive S Fargo
BIGWOOD

TOTAL LIVING: 3,717 SF
SECOND LEVEL: 1,621 SF
MAIN LEV: 1,048 SF
BASEMENT: 1,048 SF
GARAGE: 872 SF

CEILING HEIGHTS:
SECOND LEVEL: 8'-0"
MAIN LEVEL: 9'-0"
BASEMENT: 8'-0"

SHEET TITLE:

SCALE:

DATE:
12/18/2024

K-1

FOR CONSTRUCTION



Plans furnished by RED LEAF CUSTOM HOMES are prepared by designers who are not registered as professional Architects or professional Engineers. RED LEAF CUSTOM HOMES expressly disclaims any liability whatsoever for errors of any kind which may be found on the plans. Use of such plans shall be at the Sole risk of the User. Any plans furnished by RED LEAF CUSTOM HOMES are furnished without any warranty that they are suitable for any general or particular purpose. Reliance by any User of these plans and All Responsibilities for the usage and/or calculation of correct structural materials, spans, loads, bearing points and capacities, or application of the art or science of construction based on the principles of mathematics, aesthetics or the physical sciences must be the Responsibility of the Builder, the Owner, or the User of the plans.

Any use, reproduction, copying, modification, or derivative work of the plan(s), sketches, or details furnished by RED LEAF CUSTOM HOMES, LLC, is a violation of the United States Federal Copyright Act.



DRAWINGS PROVIDED BY:
RED LEAF CUSTOM HOMES

PROJECT DESCRIPTION:
AFTON
7457 Eagle Pointe Drive S Fargo
BIGWOOD

TOTAL LIVING: 3,717 SF
SECOND LEVEL: 1,621 SF
MAIN LEV: 1,048 SF
BASEMENT: 1,048 SF
GARAGE: 872 SF

CEILING HEIGHTS:
SECOND LEVEL: 8'-0"
MAIN LEVEL: 9'-0"
BASEMENT: 8'-0"

SHEET TITLE:
PERSPECTIVE VIEW

SCALE:
N.T.S.

DATE:
12/18/2024

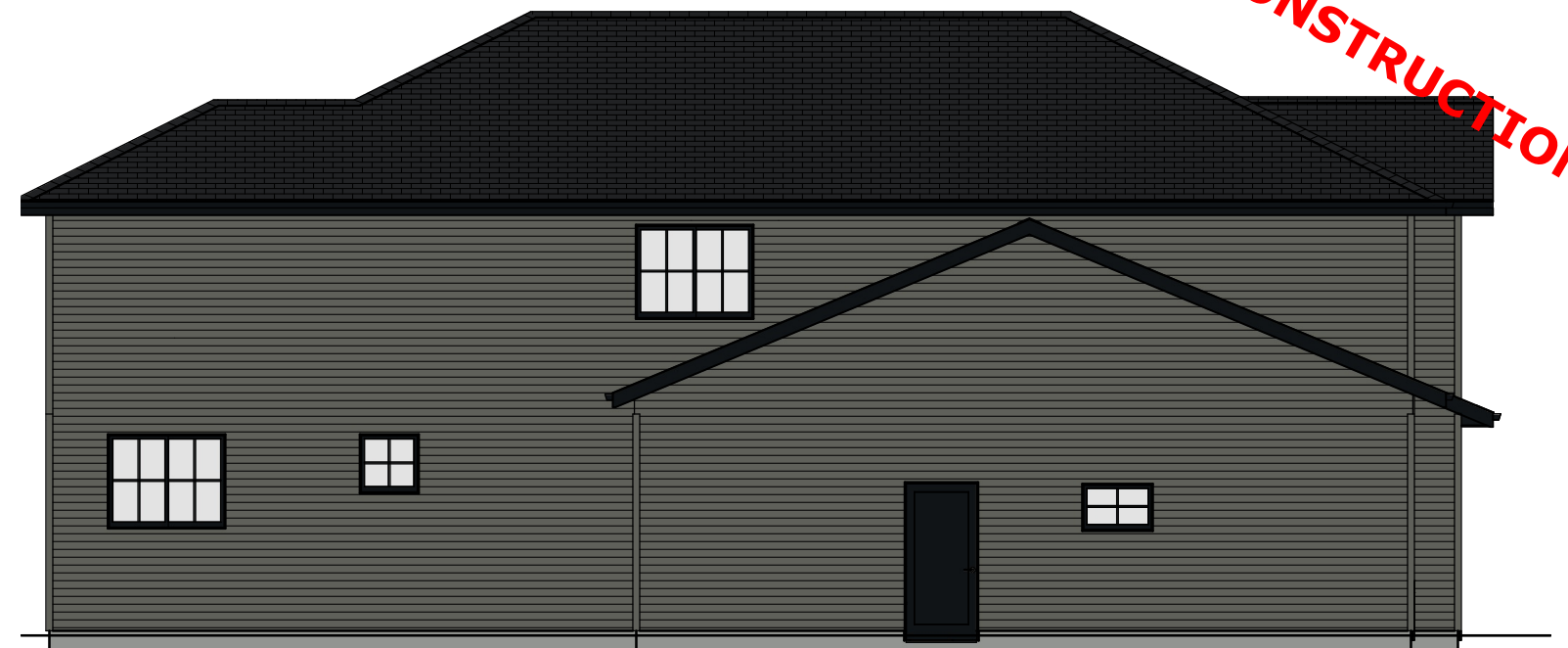
K-2

FOR CONSTRUCTION



ELEVATION - FRONT

SCALE: 1/8"=1'



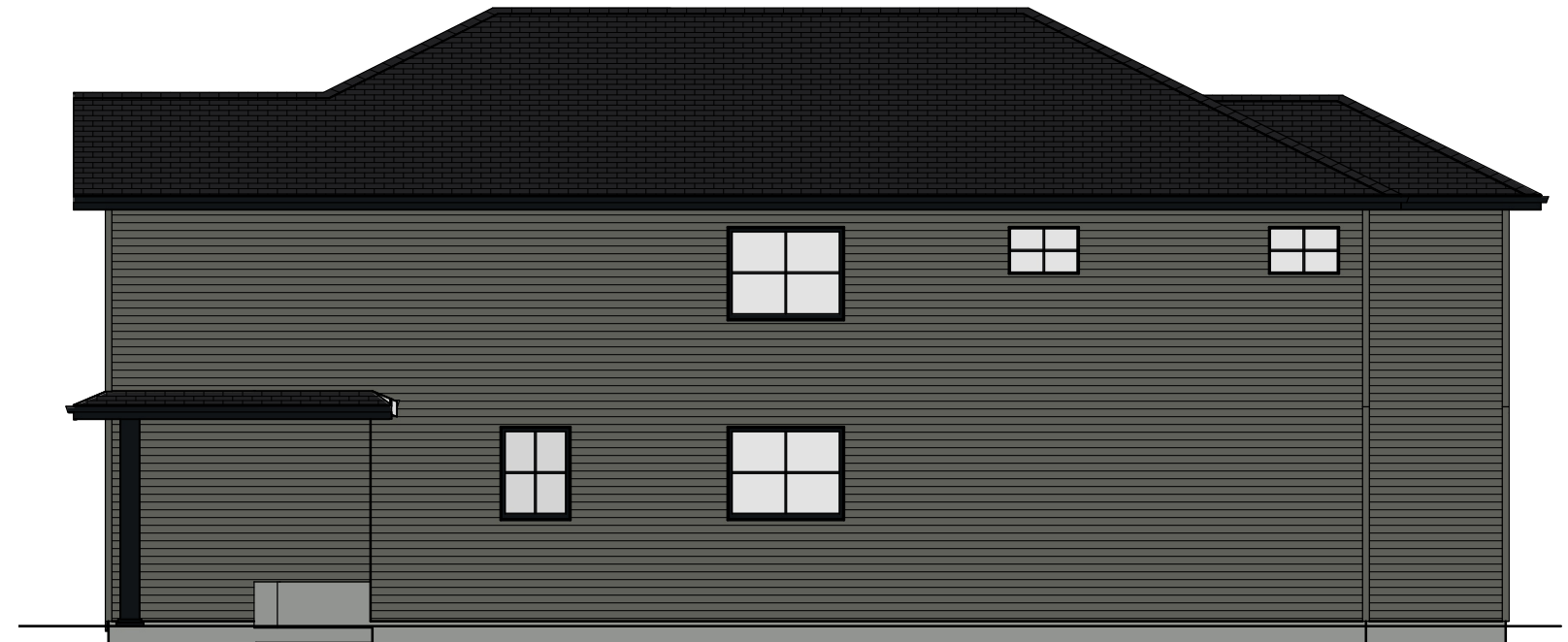
ELEVATION - LEFT

SCALE: 1/8"=1'



ELEVATION - BACK

SCALE: 1/8"=1'



ELEVATION - RIGHT

SCALE: 1/8"=1'

Plans furnished by RED LEAF CUSTOM HOMES are prepared by designers who are not registered as professional Architects or professional Engineers. RED LEAF CUSTOM HOMES expressly disclaims any liability whatsoever for errors of any kind which may be found on the plans. Use of such plans shall be at the Sole risk of the User. Any plans furnished by RED LEAF CUSTOM HOMES are furnished without any warranty that they are suitable for any general or particular purpose. Reliance by any User of these plans and All Responsibilities for the usage and/or calculation of correct structural materials, spans, loads, bearing points and capacities, or application of the art or science of construction based on the principles of mathematics, aesthetics or the physical sciences must be the Responsibility of the Builder, the Owner, or the User of the plans.

Any use, reproduction, copying, modification, or derivative work of the plan(s), sketches, or details furnished by RED LEAF CUSTOM HOMES, LLC, is a violation of the United States Federal Copyright Act.



DRAWINGS PROVIDED BY:
RED LEAF CUSTOM HOMES

PROJECT DESCRIPTION:
AFTON
7457 Eagle Pointe Drive S Fargo
BIGWOOD

TOTAL LIVING: 3,717 SF
SECOND LEVEL: 1,621 SF
MAIN LEV: 1,048 SF
BASEMENT: 1,048 SF
GARAGE: 872 SF

CEILING HEIGHTS:
SECOND LEVEL: 8'-0"
MAIN LEVEL: 9'-0"
BASEMENT: 8'-0"

SHEET TITLE:
ELEVATIONS

SCALE:
1/8" = 1'

DATE:
12/18/2024

K-3

FOR CONSTRUCTION



Plans furnished by RED LEAF CUSTOM HOMES are prepared by designers who are not registered as professional Architects or professional Engineers. RED LEAF CUSTOM HOMES expressly disclaims any liability whatsoever for errors of any kind which may be found on the plans. Use of such plans shall be at the Sole risk of the User. Any plans furnished by RED LEAF CUSTOM HOMES are furnished without any warranty that they are suitable for any general or particular purpose. Reliance by any User of these plans and All Responsibilities for the usage and/or calculation of correct structural materials, spans, loads, bearing points and capacities, or application of the art or science of construction based on the principles of mathematics, aesthetics or the physical sciences must be the Responsibility of the Builder, the Owner, or the User of the plans.

Any use, reproduction, copying, modification, or derivative work of the plan(s), sketches, or details furnished by RED LEAF CUSTOM HOMES, LLC, is a violation of the United States Federal Copyright Act.



DRAWINGS PROVIDED BY:
RED LEAF CUSTOM HOMES

PROJECT DESCRIPTION:
AFTON
7457 Eagle Pointe Drive S Fargo
BIGWOOD

TOTAL LIVING: 3,717 SF
SECOND LEVEL: 1,621 SF
MAIN LEV: 1,048 SF
BASEMENT: 1,048 SF
GARAGE: 872 SF

CEILING HEIGHTS:
SECOND LEVEL: 8'-0"
MAIN LEVEL: 9'-0"
BASEMENT: 8'-0"

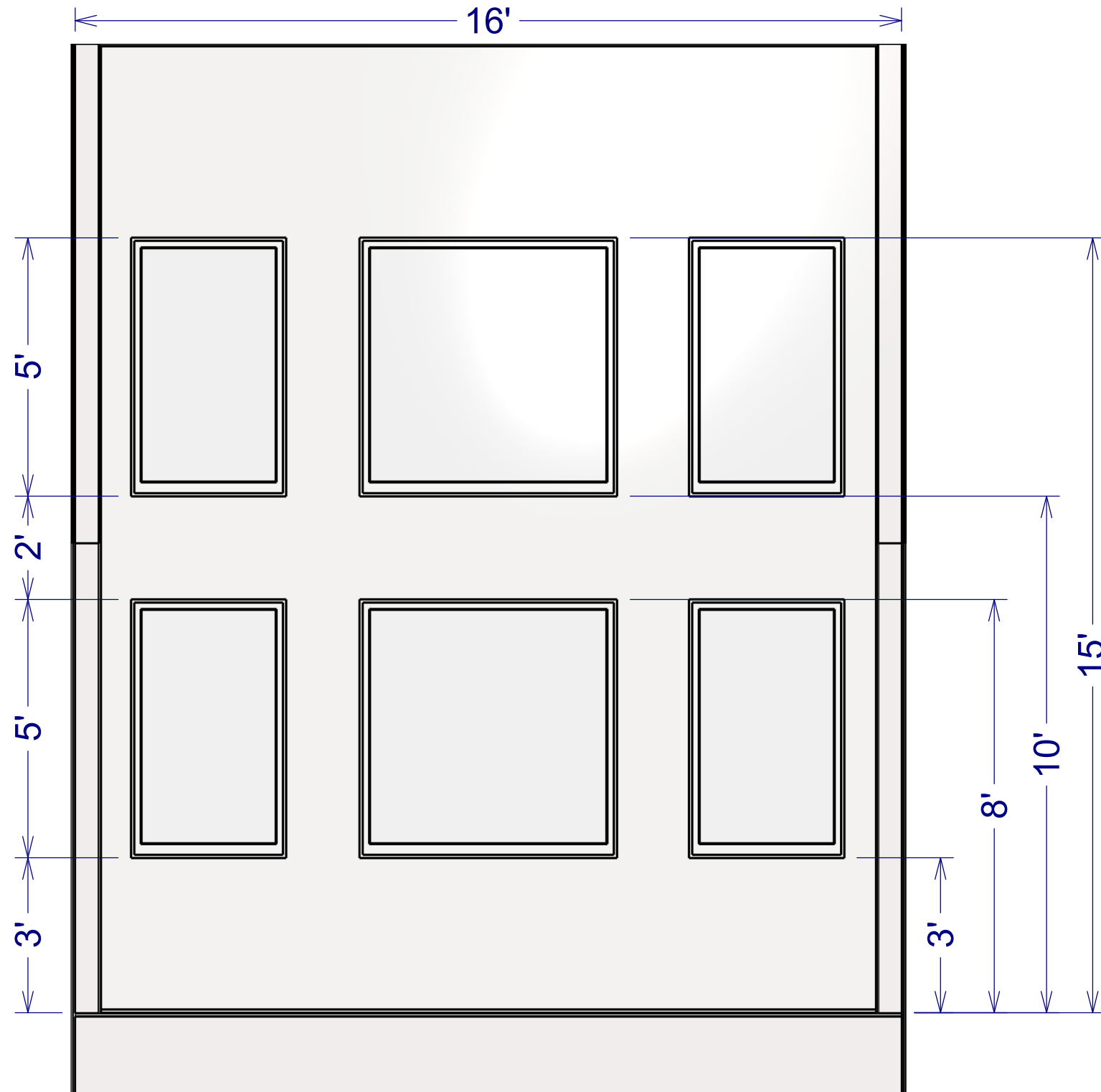
SHEET TITLE:

SCALE:

DATE:
12/18/2024

K-4

FOR CONSTRUCTION



Plans furnished by RED LEAF CUSTOM HOMES are prepared by designers who are not registered as professional Architects or professional Engineers. RED LEAF CUSTOM HOMES expressly disclaims any liability whatsoever for errors of any kind which may be found on the plans. Use of such plans shall be at the Sole risk of the User. Any plans furnished by RED LEAF CUSTOM HOMES are furnished without any warranty that they are suitable for any general or particular purpose. Reliance by any User of these plans and All Responsibilities for the usage and/or calculation of correct structural materials, spans, loads, bearing points and capacities, or application of the art or science of construction based on the principles of mathematics, aesthetics or the physical sciences must be the Responsibility of the Builder, the Owner, or the User of the plans.

Any use, reproduction, copying, modification, or derivative work of the plan(s), sketches, or details furnished by RED LEAF CUSTOM HOMES, LLC., is a violation of the United States Federal Copyright Act.



DRAWINGS PROVIDED BY:
RED LEAF CUSTOM HOMES

PROJECT DESCRIPTION:
AFTON
7457 Eagle Pointe Drive S Fargo
BIGWOOD

TOTAL LIVING: 3,717 SF
SECOND LEVEL: 1,621 SF
MAIN LEV: 1,048 SF
BASEMENT: 1,048 SF
GARAGE: 872 SF

CEILING HEIGHTS:
SECOND LEVEL: 8'-0"
MAIN LEVEL: 9'-0"
BASEMENT: 8'-0"

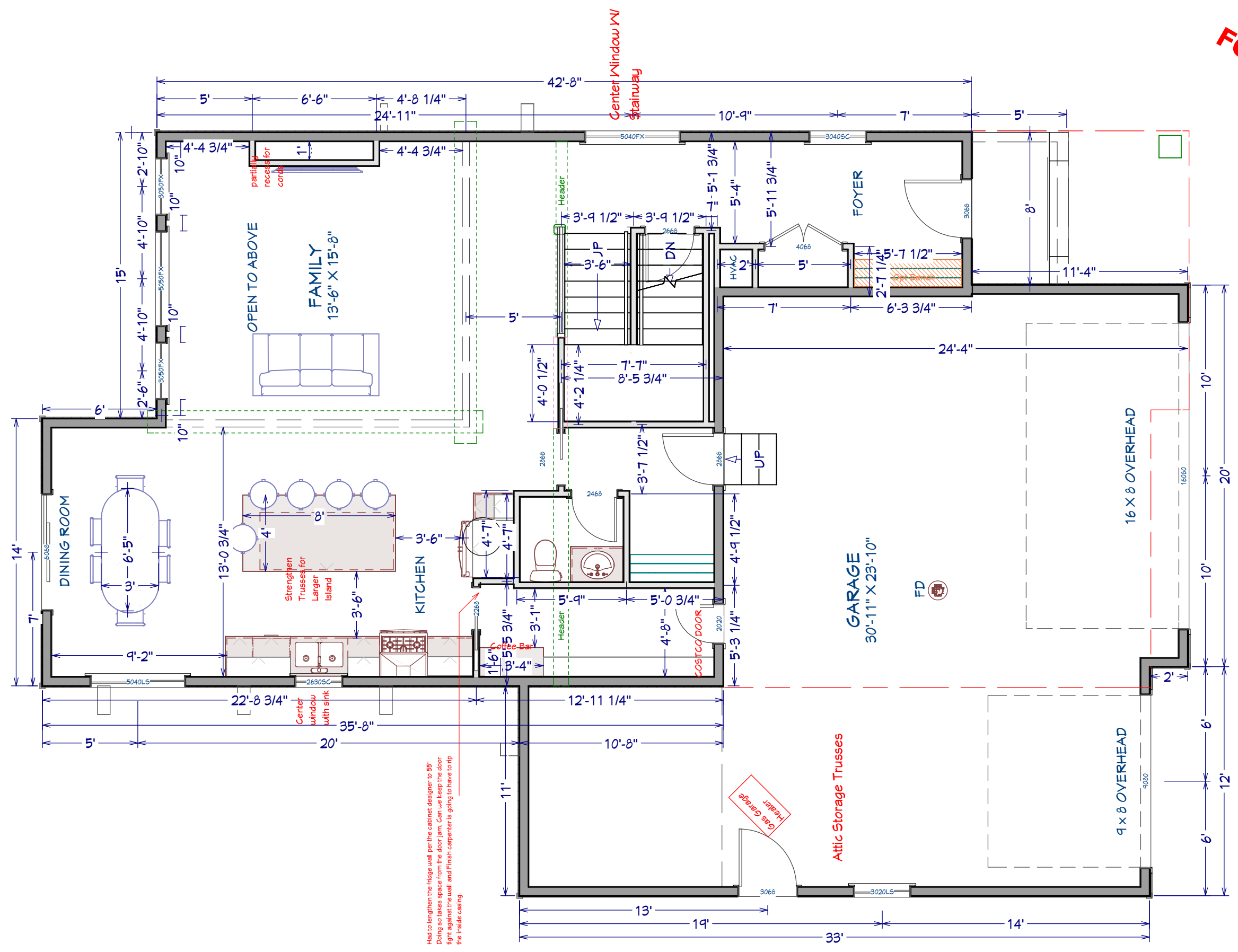
SHEET TITLE:
Window Wall

SCALE:
1/8" = 1'

DATE:
12/18/2024

K-5

FOR CONSTRUCTION



Plans furnished by RED LEAF CUSTOM HOMES are prepared by designers who are not registered as professional Architects or professional Engineers. RED LEAF CUSTOM HOMES expressly disclaims any liability whatsoever for errors of any kind which may be found on the plans. Use of such plans shall be at the Sole risk of the User. Any plans furnished by RED LEAF CUSTOM HOMES are furnished without any warranty that they are suitable for any general or particular purpose. Reliance by any User of these plans and All Responsibilities for the usage and/or calculation of correct structural materials, spans, loads, bearing points and capacities, or application of the art or science of construction based on the principles of mathematics, aesthetics or the physical sciences must be the Responsibility of the Builder, the Owner, or the User of the plans.

Any use, reproduction, copying, modification, or derivative work of the plan(s), sketches, or details furnished by RED LEAF CUSTOM HOMES, LLC, is a violation of the United States Federal Copyright Act.



DRAWINGS PROVIDED BY:
RED LEAF CUSTOM HOMES

PROJECT DESCRIPTION:
AFTON
7457 Eagle Pointe Drive S Fargo
BIGWOOD

TOTAL LIVING: 3,717 SF
SECOND LEVEL: 1,621 SF
MAIN LEV: 1,048 SF
BASEMENT: 1,048 SF
GARAGE: 872 SF

CEILING HEIGHTS:
SECOND LEVEL: 8'-0"
MAIN LEVEL: 9'-0"
BASEMENT: 8'-0"

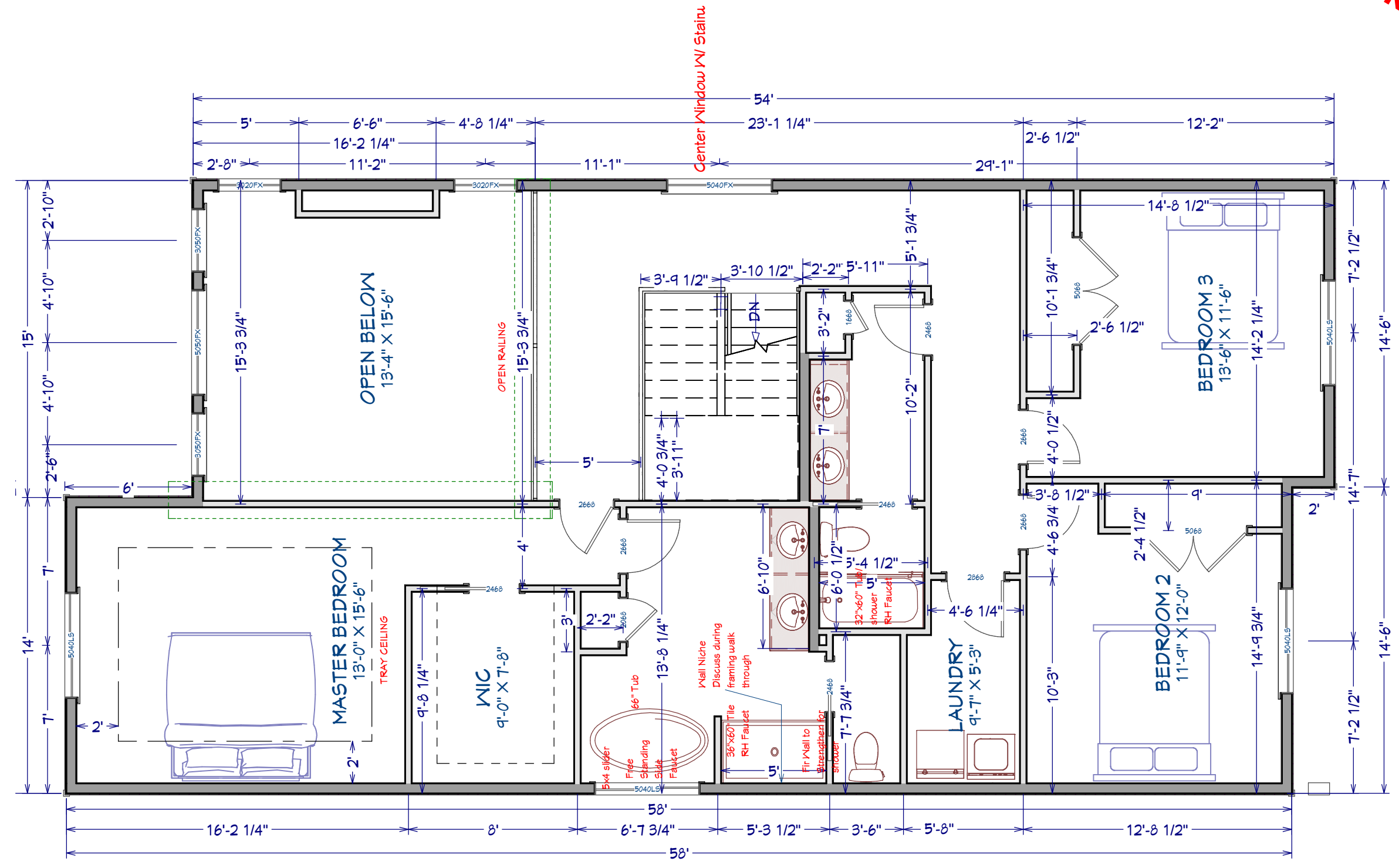
SHEET TITLE:
MAIN LEVEL

SCALE:
3/16" = 1'

DATE:
12/18/2024

K-6

FOR CONSTRUCTION



Plans furnished by RED LEAF CUSTOM HOMES are prepared by designers who are not registered as professional Architects or professional Engineers. RED LEAF CUSTOM HOMES expressly disclaims any liability whatsoever for errors of any kind which may be found on the plans. Use of such plans shall be at the Sole risk of the User. Any plans furnished by RED LEAF CUSTOM HOMES are furnished without any warranty that they are suitable for any general or particular purpose. Reliance by any User of these plans and All Responsibilities for the usage and/or calculation of correct structural materials, spans, loads, bearing points and capacities, or application of the art or science of construction based on the principles of mathematics, aesthetics or the physical sciences must be the Responsibility of the Builder, the Owner, or the User of the plans.

Any use, reproduction, copying, modification, or derivative work of the plan(s), sketches, or details furnished by RED LEAF CUSTOM HOMES, LLC, is a violation of the United States Federal Copyright Act.



DRAWINGS PROVIDED BY:
RED LEAF CUSTOM HOMES

PROJECT DESCRIPTION:
AFTON
7457 Eagle Pointe Drive S Fargo
BIGWOOD

TOTAL LIVING: 3,717 SF
SECOND LEVEL: 1,621 SF
MAIN LEV: 1,048 SF
BASEMENT: 1,048 SF
GARAGE: 872 SF

CEILING HEIGHTS:
SECOND LEVEL: 8'-0"
MAIN LEVEL: 9'-0"
BASEMENT: 8'-0"

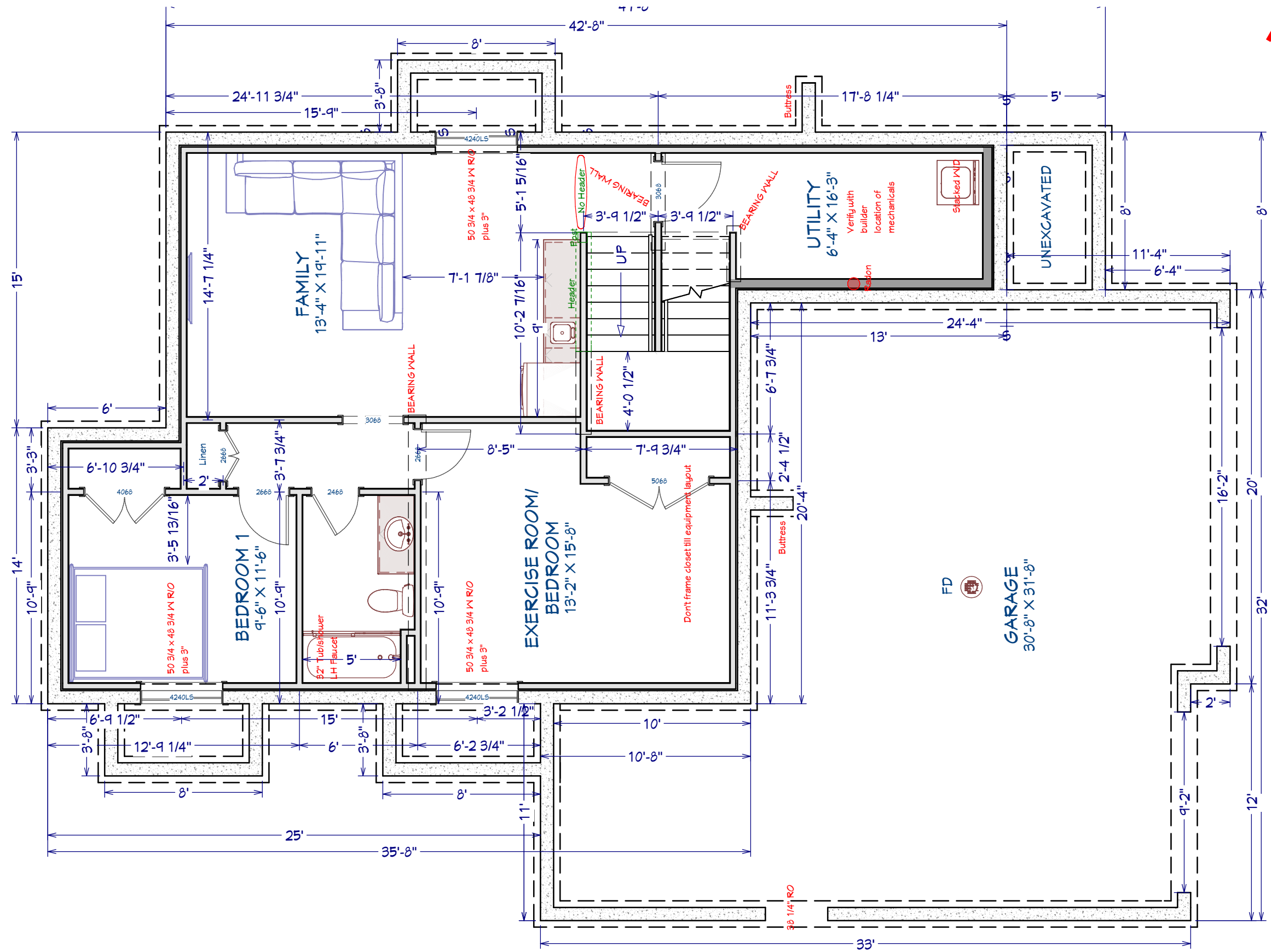
SHEET TITLE:
SECOND LEVEL

SCALE:
3/16" = 1'

DATE:
12/18/2024

K-7

FOR CONSTRUCTION



Plans furnished by RED LEAF CUSTOM HOMES are prepared by designers who are not registered as professional Architects or professional Engineers. RED LEAF CUSTOM HOMES expressly disclaims any liability whatsoever for errors of any kind which may be found on the plans. Use of such plans shall be at the Sole risk of the User. Any plans furnished by RED LEAF CUSTOM HOMES are furnished without any warranty that they are suitable for any general or particular purpose. Reliance by any User of these plans and All Responsibilities for the usage and/or calculation of correct structural materials, spans, loads, bearing points and capacities, or application of the art or science of construction based on the principles of mathematics, aesthetics or the physical sciences must be the Responsibility of the Builder, the Owner, or the User of the plans.

Any use, reproduction, copying, modification, or derivative work of the plan(s), sketches, or details furnished by RED LEAF CUSTOM HOMES, LLC, is a violation of the United States Federal Copyright Act.



DRAWINGS PROVIDED BY:
RED LEAF CUSTOM HOMES

PROJECT DESCRIPTION:
AFTON
7457 Eagle Pointe Drive S Fargo
BIGWOOD

TOTAL LIVING: 3,717 SF
SECOND LEVEL: 1,621 SF
MAIN LEV: 1,048 SF
BASEMENT: 1,048 SF
GARAGE: 872 SF

CEILING HEIGHTS:
SECOND LEVEL: 8'-0"
MAIN LEVEL: 9'-0"
BASEMENT: 8'-0"

SHEET TITLE:
BASEMENT

SCALE:
3/16" = 1'

DATE:
12/18/2024

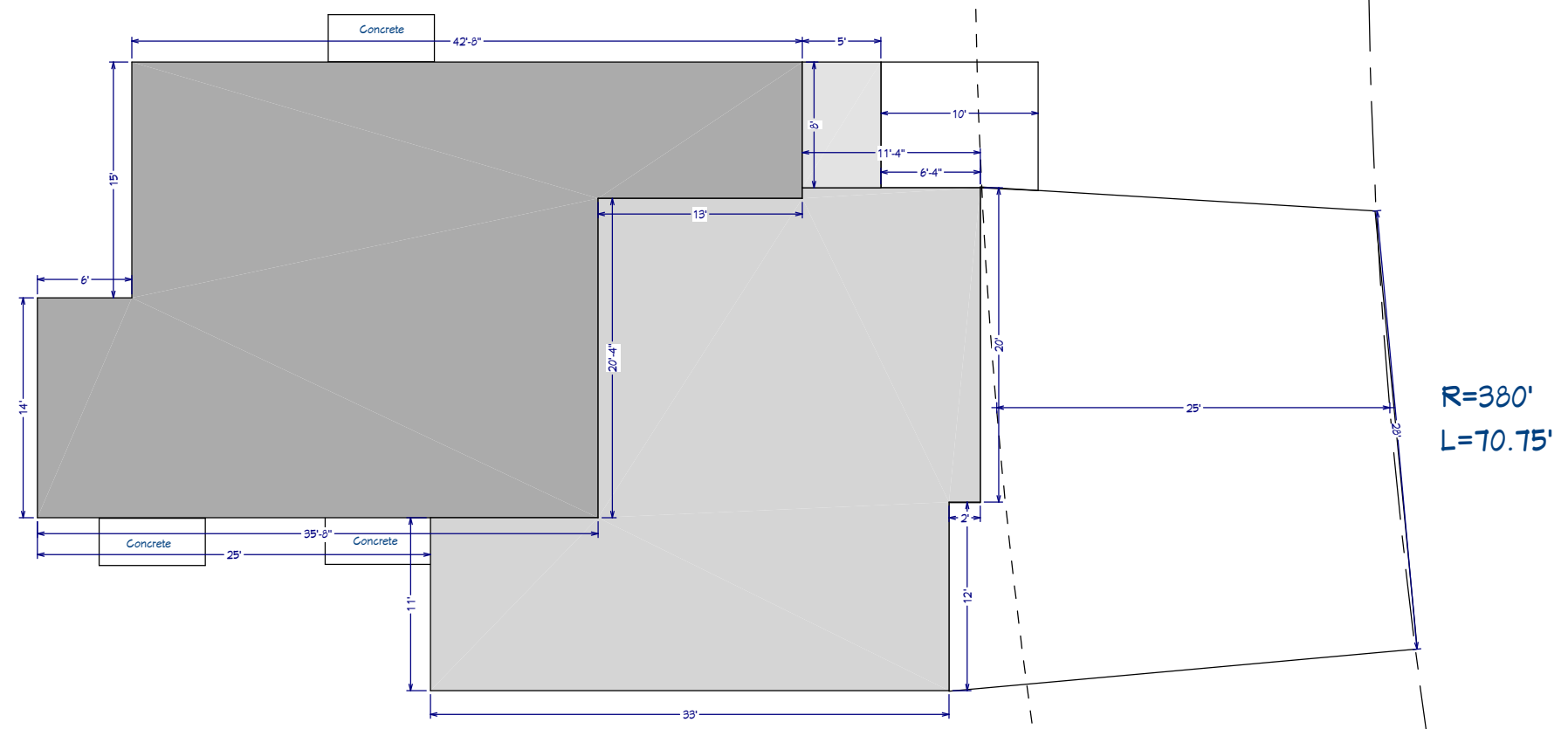
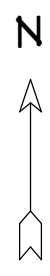
K-8

FOR CONSTRUCTION

140'

80'

LOT 10, BLK 1
Eagle Pointe 2nd



R=380'
L=70.75'

146.57'

Plans furnished by RED LEAF CUSTOM HOMES are prepared by designers who are not registered as professional Architects or professional Engineers. RED LEAF CUSTOM HOMES expressly disclaims any liability whatsoever for errors of any kind which may be found on the plans. Use of such plans shall be at the Sole risk of the User. Any plans furnished by RED LEAF CUSTOM HOMES are furnished without any warranty that they are suitable for any general or particular purpose. Reliance by any User of these plans and All Responsibilities for the usage and/or calculation of correct structural materials, spans, loads, bearing points and capacities, or application of the art or science of construction based on the principles of mathematics, aesthetics or the physical sciences must be the Responsibility of the Builder, the Owner, or the User of the plans.

Any use, reproduction, copying, modification, or derivative work of the plan(s), sketches, or details furnished by RED LEAF CUSTOM HOMES, LLC., is a violation of the United States Federal Copyright Act.



DRAWINGS PROVIDED BY:
RED LEAF CUSTOM HOMES

PROJECT DESCRIPTION:
AFTON
7457 Eagle Pointe Drive S Fargo
BIGWOOD

TOTAL LIVING: 3,717 SF
SECOND LEVEL: 1,621 SF
MAIN LEV: 1,048 SF
BASEMENT: 1,048 SF
GARAGE: 872 SF

CEILING HEIGHTS:
SECOND LEVEL: 8'-0"
MAIN LEVEL: 9'-0"
BASEMENT: 8'-0"

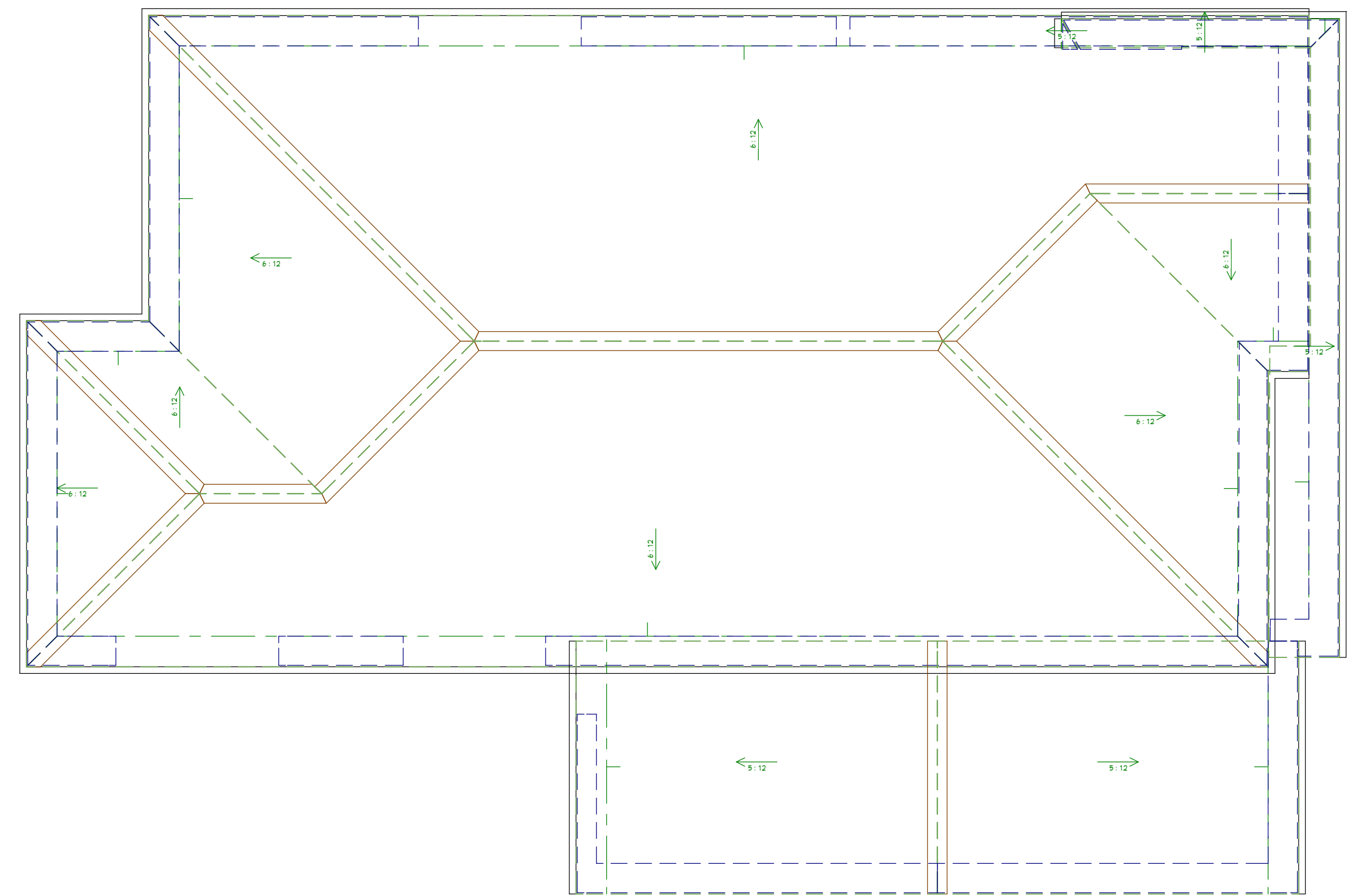
SHEET TITLE:
PLOT PLAN

SCALE:
3/32"=1'

DATE:
12/18/2024

K-9

FOR CONSTRUCTION



Plans furnished by RED LEAF CUSTOM HOMES are prepared by designers who are not registered as professional Architects or professional Engineers. RED LEAF CUSTOM HOMES expressly disclaims any liability whatsoever for errors of any kind which may be found on the plans. Use of such plans shall be at the Sole risk of the User. Any plans furnished by RED LEAF CUSTOM HOMES are furnished without any warranty that they are suitable for any general or particular purpose. Reliance by any User of these plans and All Responsibilities for the usage and/or calculation of correct structural materials, spans, loads, bearing points and capacities, or application of the art or science of construction based on the principles of mathematics, aesthetics or the physical sciences must be the Responsibility of the Builder, the Owner, or the User of the plans.

Any use, reproduction, copying, modification, or derivative work of the plan(s), sketches, or details furnished by RED LEAF CUSTOM HOMES, LLC, is a violation of the United States Federal Copyright Act.



DRAWINGS PROVIDED BY:
RED LEAF CUSTOM HOMES

PROJECT DESCRIPTION:
AFTON
7457 Eagle Pointe Drive S Fargo
BIGWOOD

TOTAL LIVING: 3,717 SF
SECOND LEVEL: 1,621 SF
MAIN LEV: 1,048 SF
BASEMENT: 1,048 SF
GARAGE: 872 SF

CEILING HEIGHTS:
SECOND LEVEL: 8'-0"
MAIN LEVEL: 9'-0"
BASEMENT: 8'-0"

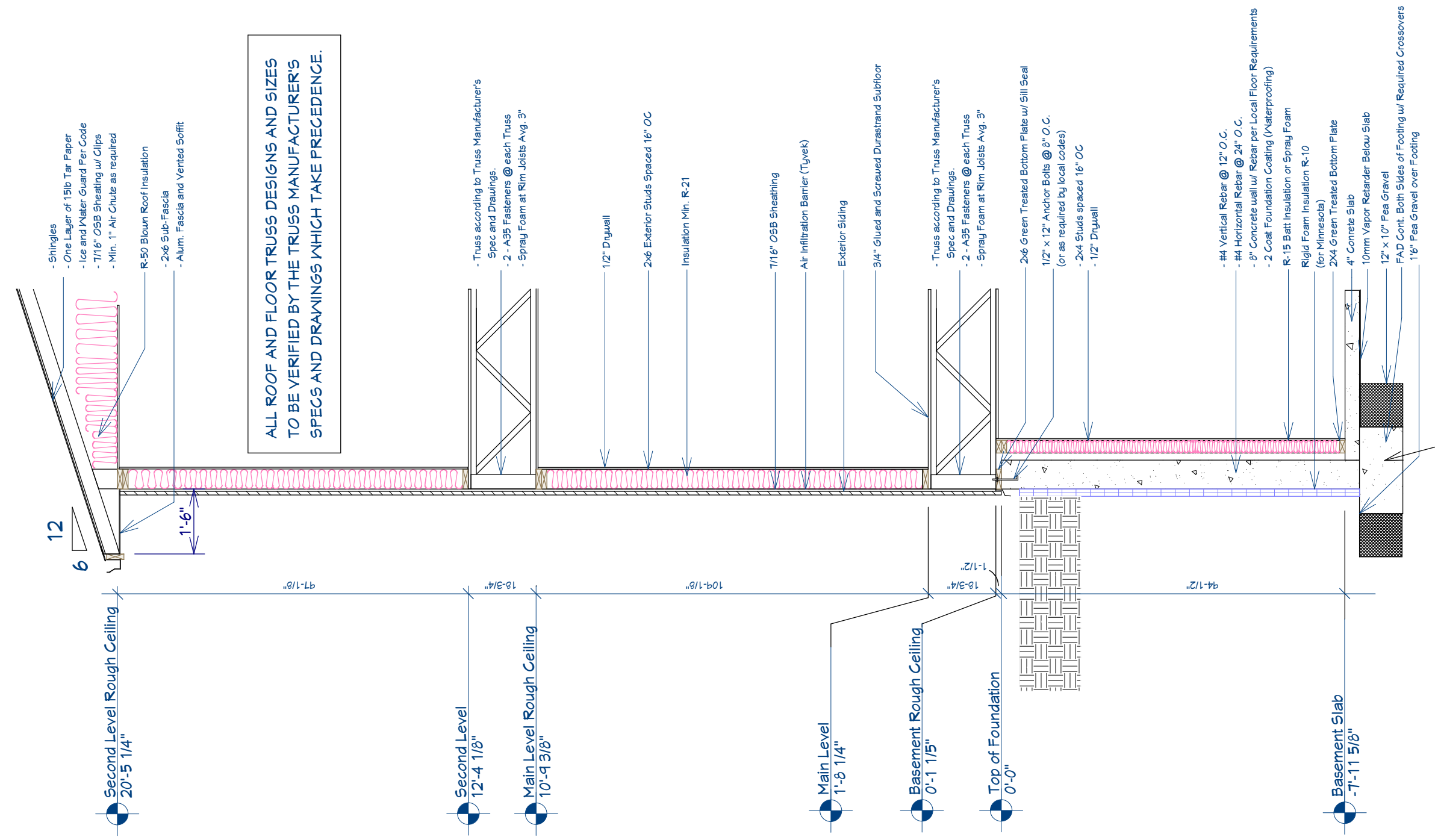
SHEET TITLE:
ROOF PLAN

SCALE:
3/16"=1'

DATE:
12/18/2024

K-10

FOR CONSTRUCTION



ALL ROOF AND FLOOR TRUSS DESIGNS AND SIZES TO BE VERIFIED BY THE TRUSS MANUFACTURER'S SPECS AND DRAWINGS WHICH TAKE PRECEDENCE.

Plans furnished by RED LEAF CUSTOM HOMES are prepared by designers who are not registered as professional Architects or professional Engineers. RED LEAF CUSTOM HOMES expressly disclaims any liability whatsoever for errors of any kind which may be found on the plans. Use of such plans shall be at the Sole risk of the User. Any plans furnished by RED LEAF CUSTOM HOMES are furnished without any warranty that they are suitable for any general or particular purpose. Reliance by any User of these plans and All Responsibilities for the usage and/or calculation of correct structural materials, spans, loads, bearing points and capacities, or application of the art or science of construction based on the principles of mathematics, aesthetics or the physical sciences must be the Responsibility of the Builder, the Owner, or the User of the plans.

Any use, reproduction, copying, modification, or derivative work of the plan(s), sketches, or details furnished by RED LEAF CUSTOM HOMES, LLC, is a violation of the United States Federal Copyright Act.



DRAWINGS PROVIDED BY:
RED LEAF CUSTOM HOMES

PROJECT DESCRIPTION:
AFTON
7457 Eagle Pointe Drive S Fargo
BIGWOOD

TOTAL LIVING: 3,717 SF
SECOND LEVEL: 1,621 SF
MAIN LEV: 1,048 SF
BASEMENT: 1,048 SF
GARAGE: 872 SF

CEILING HEIGHTS:
SECOND LEVEL: 8'-0"
MAIN LEVEL: 9'-0"
BASEMENT: 8'-0"

SHEET TITLE:
WALL SECTION

SCALE:
3/8" = 1'

DATE:
12/18/2024

K-11